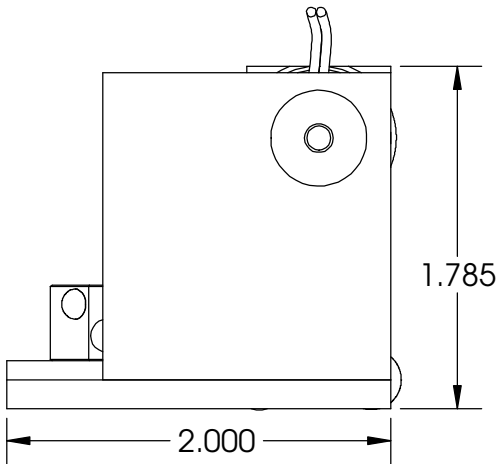
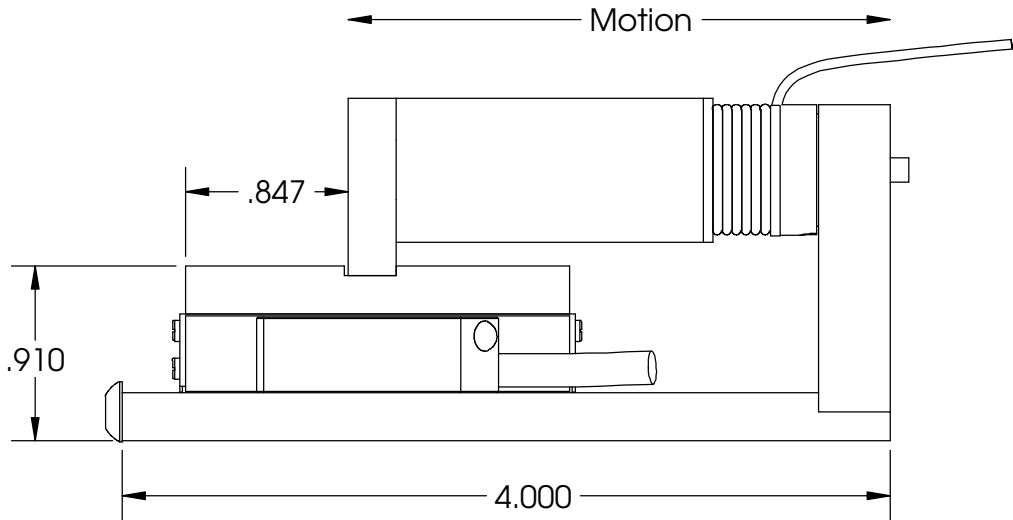
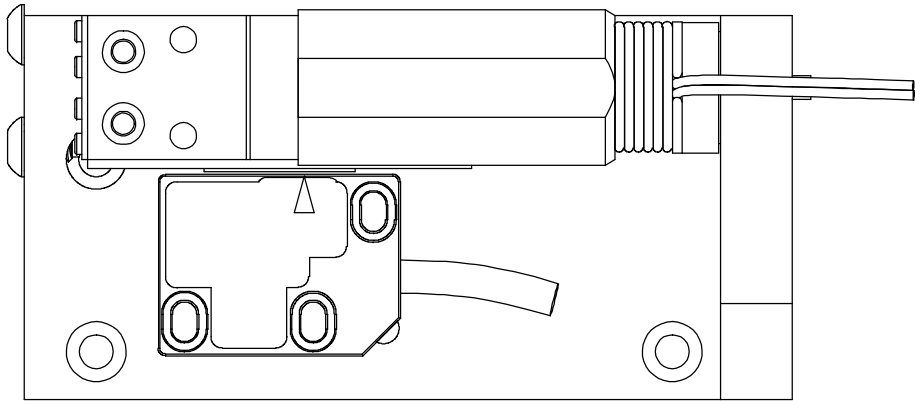


These drawings and specifications are the property of H2W Technologies, Inc. They are issued in confidence and shall not be reproduced, copied, or used without written permission from H2W Technologies, Inc. (www.h2wtech.com)

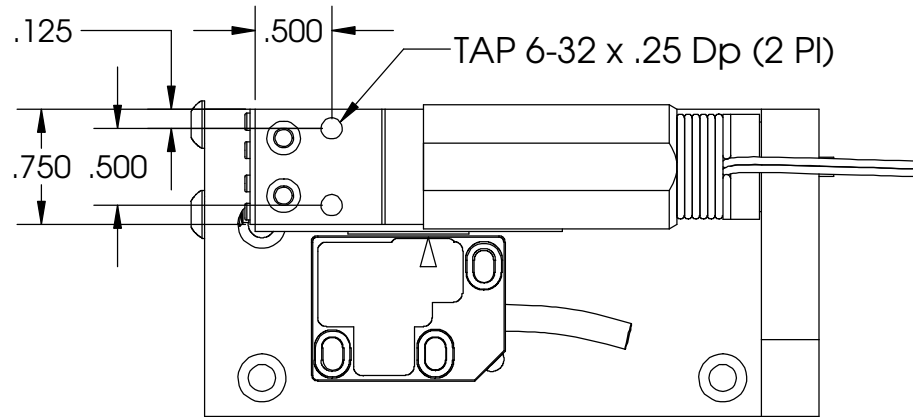
| REVISION TABLE | | | | | |
|----------------|------|--|--------|----------|----------|
| REV | ECN# | DESCRIPTION | REV BY | APPROVED | DATE |
| --- | --- | Original Drawing | OOG | MPW | 1-12-05 |
| A | 1475 | Added end of travel hard stops. Moved stage mounting holes | OOG | MPW | 11-21-12 |



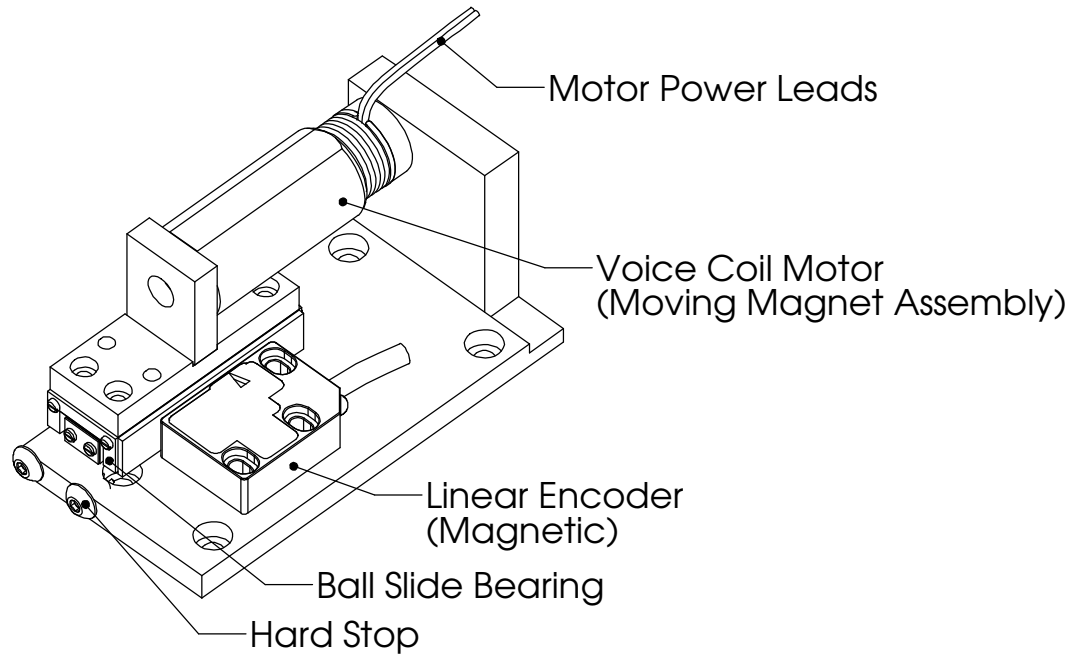
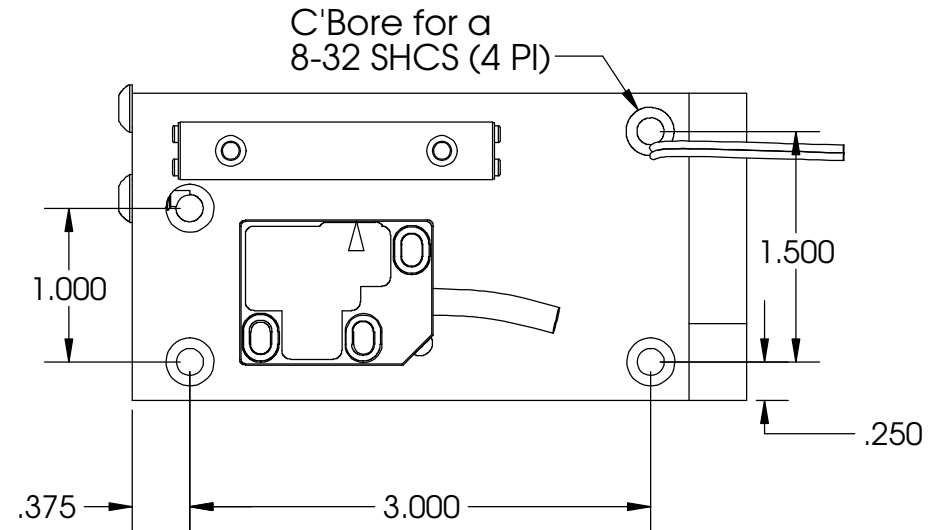
| | | | | | | | |
|--|----------|------|----------|----------------|---|--------|-------|
| UNLESS SPECIFIED OTHERWISE: All dimensions are in inches Standard Tolerances are as follows XXX ±.005 ANGLES ±1° XX ±.010 FILLETS .010 X ±.020 CORNERS .010 Remove All Burrs and Sharp Edges | MATERIAL | | | | TITLE Voice Coil Positioning Stage Model #: VCS06-005-BS-01-M | | |
| | FINISH | | | | | | |
| | DRAWN | DATE | APPROVED | DATE | DWG # | REV | SHEET |
| OOG | 1-12-05 | MPW | 1-12-05 | 31-0053 | A | 1 of 3 | |

H2W Technologies, Inc.
26470 Ruether Ave #102 Santa Clarita, CA 91350 USA
Tel: (661) 251-2081 Fax: (661) 251-2067
www.h2wtech.com

PAYLOAD MOUNTING HOLES

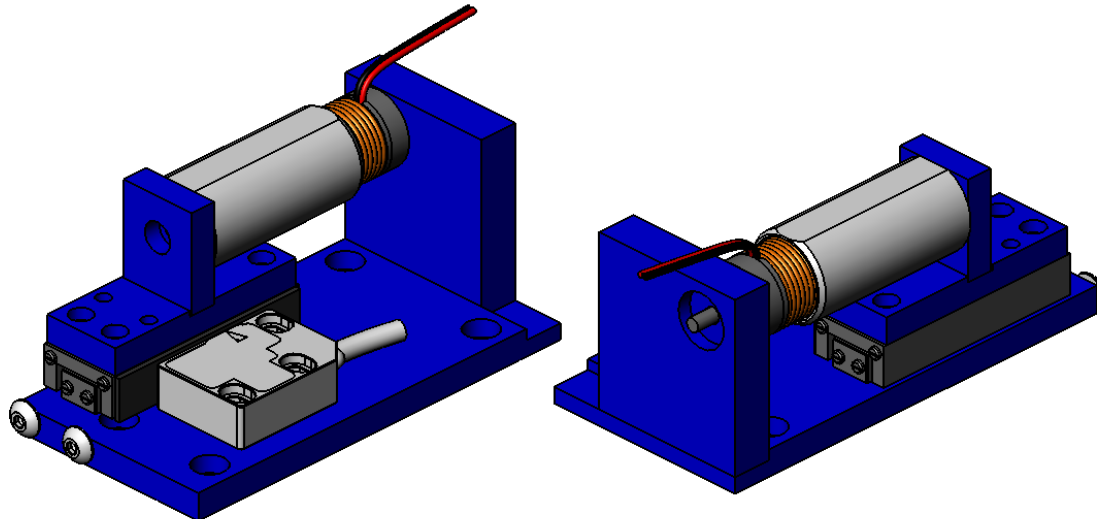


PARTS HAVE BEEN HIDDEN TO SHOW STAGE MOUNTING HOLES



| | | |
|------------------------------|-----|--------|
| TITLE | | |
| Voice Coil Positioning Stage | | |
| Model #: VCS06-005-BS-01-M | | |
| DWG # | REV | SHEET |
| 31-0053 | A | 2 of 3 |

| VOICE COIL POSITIONING STAGE SPECIFICATIONS | | |
|---|---------------------|-------------------|
| Motor P/N | NCC06-08-005-2X | |
| Stroke | 0.60" | 15.2 mm |
| Encoder Resolution | 1 micron | |
| Bearing Type | Ball Slide | |
| Moving Mass | 0.24 LBS | 109 grams |
| Total Mass | 0.6 LBS | 272 grams |
| Resistance @ 20C | 3.0 ohms | |
| Inductance @ 20C | 0.60 mH | |
| Electrical Time Constant | 0.20 msec | |
| Motor Constant | 0.50 LBS/SQRT(Watt) | 2.23 N/SQRT(Watt) |
| Force Constant | 0.87 LBS/Amp | 3.85 N/Amp |
| Back EMF | 0.10 V/ips | 3.85 V/m/sec |
| Continuous Force | 0.85 LBS | 3.78 N |
| Max Power @ 100% Duty | 3 Watts | |
| Peak Force | 2.55 LBS | 11.35 N |
| Max Power @ 10% Duty | 26 Watts | |



| | | |
|---|-----------------|-----------------|
| TITLE Voice Coil Positioning Stage Model #: VCS06-005-BS-01-M | | |
| DWG # 31-0053 | REV A | SHEET 3 of 3 |